

PARTS LIST						
ITEM	QTY	PART NO.	PART DESCRIPTION	LENGTH	UNIT WT.	NET WT.
1	4	X-LPP-SA14	SIDE ARM WELDMENT FOR 14' LOW PROFILE PLATFORM		151.68	606.71
2	4	X-LPP-CW	LOW PROFILE PLATFORM CORNER WELDMENT		198.75	795.01
3	1	HALO	HALO		40.35	40.35
4	4	X-RM4HD	WELDMENT FOR 4-SIDED HEAVY DUTY RING MOUNT		71.27	285.08
5	4	X-WWSP4	WALKWAY SUPPORT PLATE FOR 4-SIDED PLATFORM	12 in	13.00	52.01
6	16	X-LPP-PC	FACE PIPE CONNECTION BRACKET FORTRESS PLATFORM		7.01	112.15
7	16	X-WWSB	WALKWAY SUPPORT BRACKET		6.73	107.67
8	16	X-SCX3-FR	FORTRESS CROSSOVER PLATE		6.61	105.82
9	16	X-LPP-A7	CORNER WELDMENT ATTACHMENT ANGLE	2 1/2 in	1.27	20.33
10	4	GRS12-12	12" WIDE GRIP STRUT	120 in	31.00	124.00
11	4	P30150	2-7/8" X 150" (2-1/2" SCH. 40) GALVANIZED PIPE	150 in	76.94	307.75
12	16	P2120	2-3/8" x 120" (2" SCH. 40) GALVANIZED PIPE	120 in	36.61	585.84
13	16	G58R-48	5/8" x 48" THREADED ROD (HDG.)	48 in	0.40	6.38
13	16	G58R-24	5/8" x 24" THREADED ROD (HDG.)	24 in	0.40	6.38
14	8	G58R-8	5/8" x 8" THREADED ROD (HDG.)		0.70	5.58
15	16	X-UB5304	5/8" X 3" X 4-1/4" X 2-1/2" U-BOLT (HDG.)		0.98	15.60
16	64	X-UB5300	5/8" X 3" X 5-1/4" X 2-1/2" U-BOLT (HDG.)		1.15	73.56
17	32	X-UB5258	5/8" X 2-5/8" X 4-1/2" X 2" U-BOLT (HDG.)		1.00	32.00
18	48	G58214	5/8" x 2-1/4" HDG HEX BOLT GR5		0.29	13.99
19	224	G58FW	5/8" HDG USS FLATWASHER	1/8 in	0.07	15.78
20	256	G58LW	5/8" HDG LOCKWASHER		0.03	6.68
21	256	G58NUT	5/8" HDG HEAVY 2H HEX NUT		0.13	33.25
22	32	X-UB3212	3/8" X 2-1/2" X 3-5/8" X 1-3/4" U-BOLT (HDG.)		0.29	9.30
23	64	G3802	3/8" x 2" HDG HEX BOLT GR5		0.09	5.62
24	48	SQW38	3/8" SQUARE WASHER	2 in	0.29	13.89
25	128	G38FW	3/8" HDG USS FLATWASHER		0.01	1.50
26	128	G38LW	3/8" HDG LOCKWASHER		0.01	0.85
27	128	G38NUT	3/8" HDG HEAVY 2H HEX NUT		0.03	4.33
TOTAL WT. #						3896.98

TOLERANCE NOTES

TOLERANCES ON DIMENSIONS, UNLESS OTHERWISE NOTED ARE:
SAWED, SHEARED AND GAS CUT EDGES ($\pm 0.030"$)
DRILLED AND GAS CUT HOLES ($\pm 0.030"$) - NO CONING OF HOLES
LASER CUT EDGES AND HOLES ($\pm 0.010"$) - NO CONING OF HOLES
BENDS ARE $\pm 1/2$ DEGREE
ALL OTHER MACHINING ($\pm 0.030"$)
ALL OTHER ASSEMBLY ($\pm 0.060"$)

PROPRIETARY NOTE:
THE DATA AND TECHNIQUES CONTAINED IN THIS DRAWING ARE PROPRIETARY INFORMATION OF VALMONT INDUSTRIES AND CONSIDERED A TRADE SECRET. ANY USE OR DISCLOSURE WITHOUT THE CONSENT OF VALMONT INDUSTRIES IS STRICTLY PROHIBITED.

DESCRIPTION

F4P-12-H5

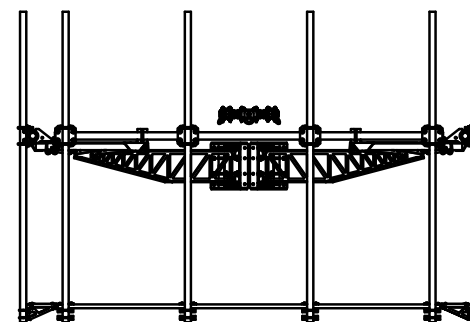
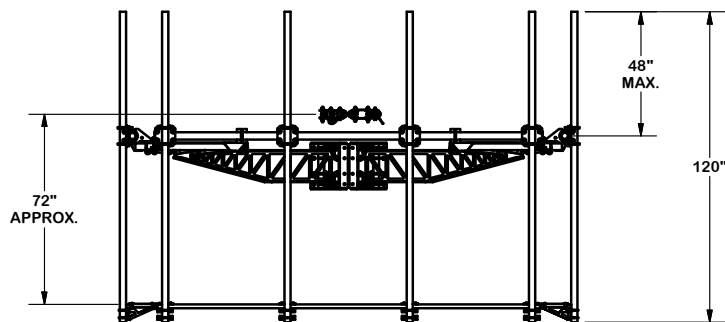
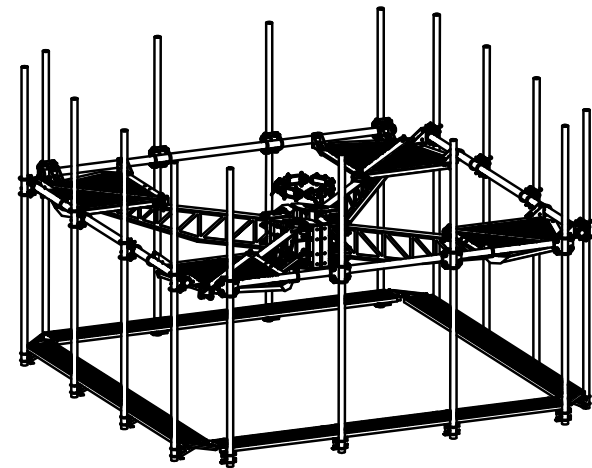
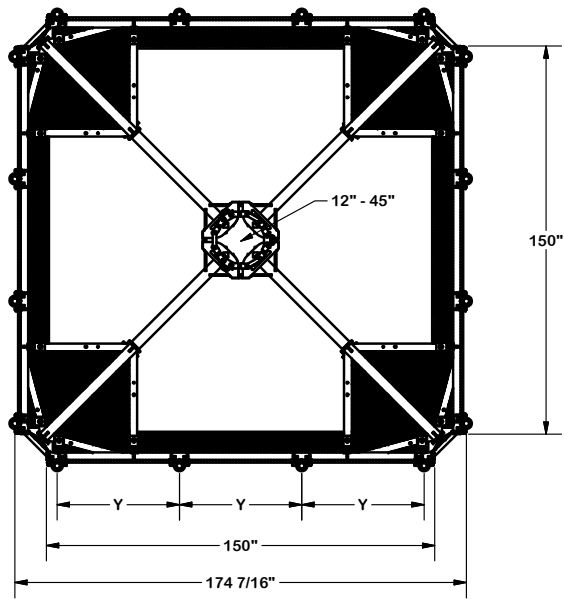
CPD NO.		DRAWN BY	ENG. APPROVAL
		CEK 10/29/2017	
CLASS	SUB	DRAWING USAGE	CHECKED BY
81	02	CUSTOMER	BMC 11/1/2017



Engineering
Support Team:
1-888-753-7446

Locations:
New York, NY
Atlanta, GA
Los Angeles, CA
Plymouth, IN
Salem, OR
Dallas, TX

PART NO.	F4P-12-H5	PAGE 1 OF 4
DWG. NO.	F4P-12-H5	



TOLERANCE NOTES

TOLERANCES ON DIMENSIONS, UNLESS OTHERWISE NOTED ARE:
 SAWED, SHEARED AND GAS CUT EDGES ($\pm 0.030"$)
 DRILLED AND GAS CUT HOLES ($\pm 0.030"$) - NO CONING OF HOLES
 LASER CUT EDGES AND HOLES ($\pm 0.010"$) - NO CONING OF HOLES
 BENDS ARE $\pm 1/2$ DEGREE
 ALL OTHER MACHINING ($\pm 0.030"$)
 ALL OTHER ASSEMBLY ($\pm 0.060"$)

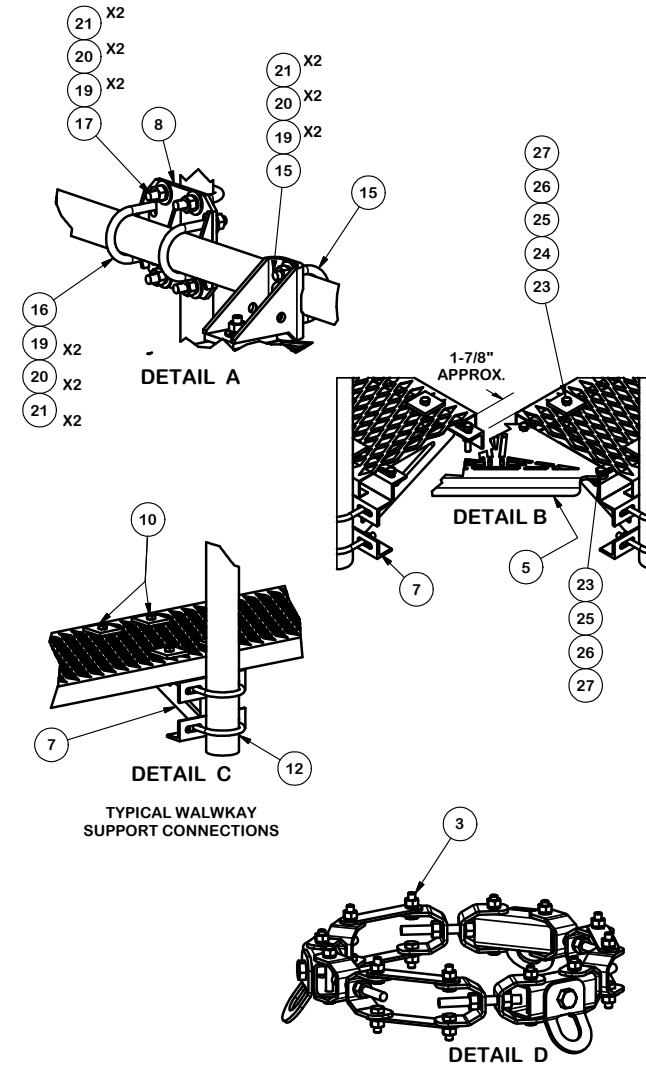
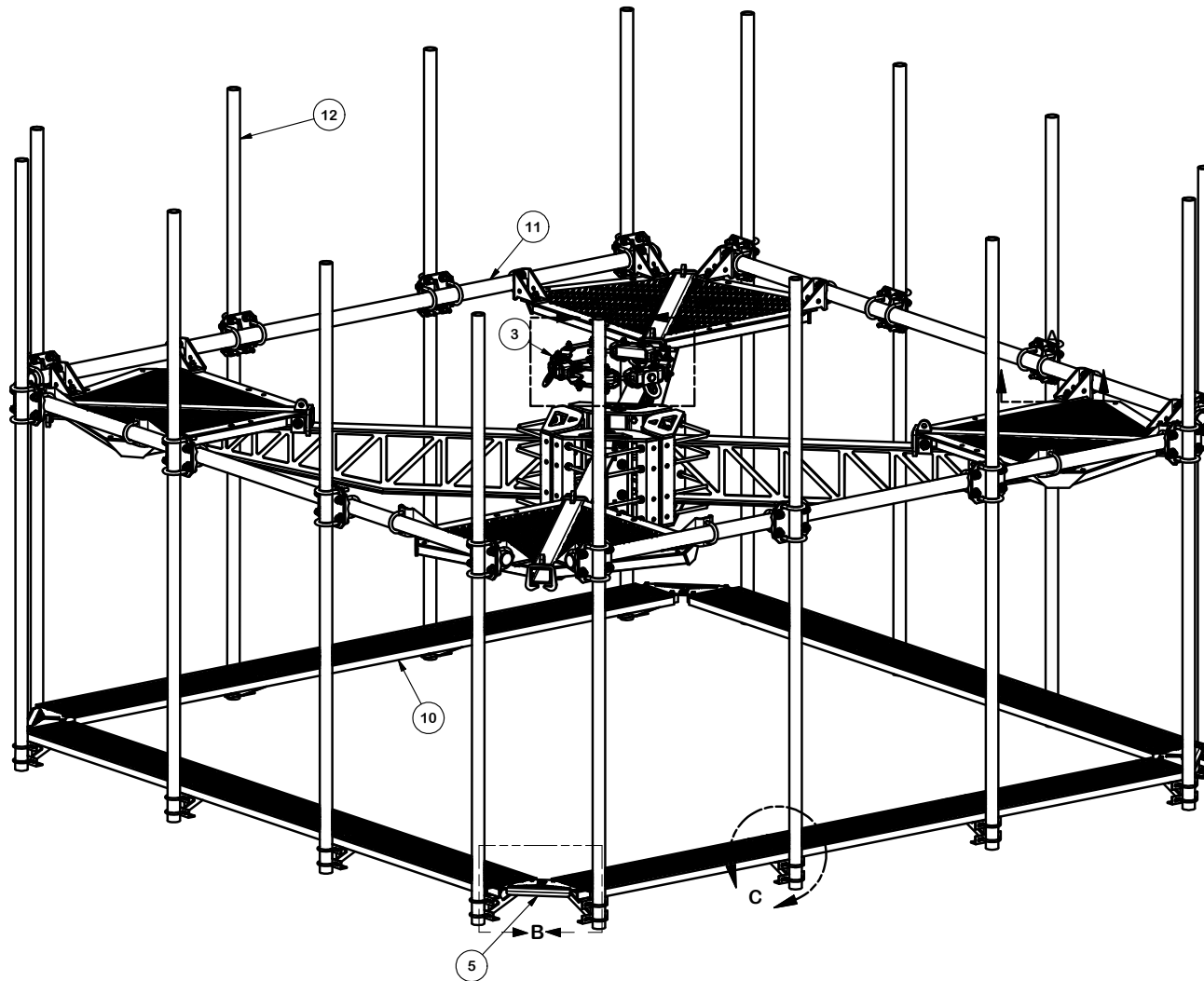
PROPRIETARY NOTE:
 THE DATA AND TECHNIQUES CONTAINED IN THIS DRAWING ARE PROPRIETARY INFORMATION OF VALMONT INDUSTRIES AND CONSIDERED A TRADE SECRET. ANY USE OR DISCLOSURE WITHOUT THE CONSENT OF VALMONT INDUSTRIES IS STRICTLY PROHIBITED.

DESCRIPTION			F4P-12-H5	
CPD NO.	DRAWN BY	ENG. APPROVAL	PART NO.	
	CEK 10/29/2017		F4P-12-H5	
CLASS	SUB	DRAWING USAGE	CHECKED BY	DWG. NO.
81	02	CUSTOMER	BMC 11/1/2017	F4P-12-H5



Engineering
 Support Team:
 1-888-753-7446

Locations:
 New York, NY
 Atlanta, GA
 Los Angeles, CA
 Plymouth, IN
 Salem, OR
 Dallas, TX



TOLERANCE NOTES

TOLERANCES ON DIMENSIONS, UNLESS OTHERWISE NOTED ARE:
 SAWED, SHEARED AND GAS CUT EDGES (± 0.030 ")
 DRILLED AND GAS CUT HOLES (± 0.030 ") - NO CONING OF HOLES
 LASER CUT EDGES AND HOLES (± 0.010 ") - NO CONING OF HOLES
 BENDS ARE $\pm 1/2$ DEGREE
 ALL OTHER MACHINING (± 0.030 ")
 ALL OTHER ASSEMBLY (± 0.060 ")

PROPRIETARY NOTE:
 THE DATA AND TECHNIQUES CONTAINED IN THIS DRAWING ARE PROPRIETARY INFORMATION OF VALMONT INDUSTRIES AND CONSIDERED A TRADE SECRET. ANY USE OR DISCLOSURE WITHOUT THE CONSENT OF VALMONT INDUSTRIES IS STRICTLY PROHIBITED.

DESCRIPTION

F4P-12-H5

CPD NO.	DRAWN BY	ENG. APPROVAL
CLASS	CEK 10/29/2017	
81	DRAWING USAGE	CHECKED BY
02	CUSTOMER	BMC 11/1/2017



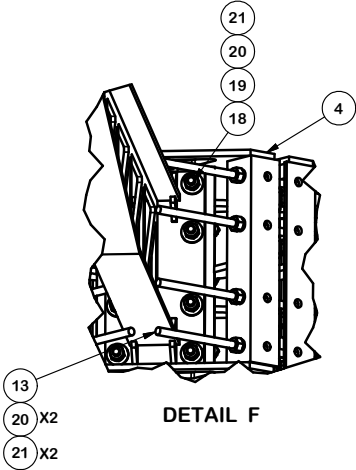
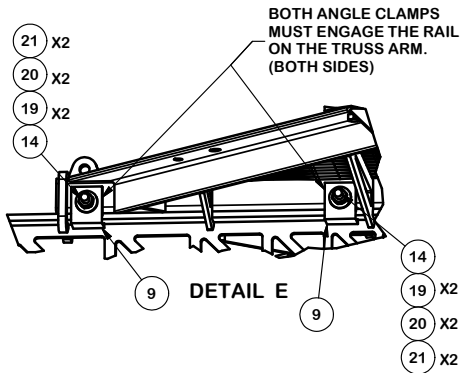
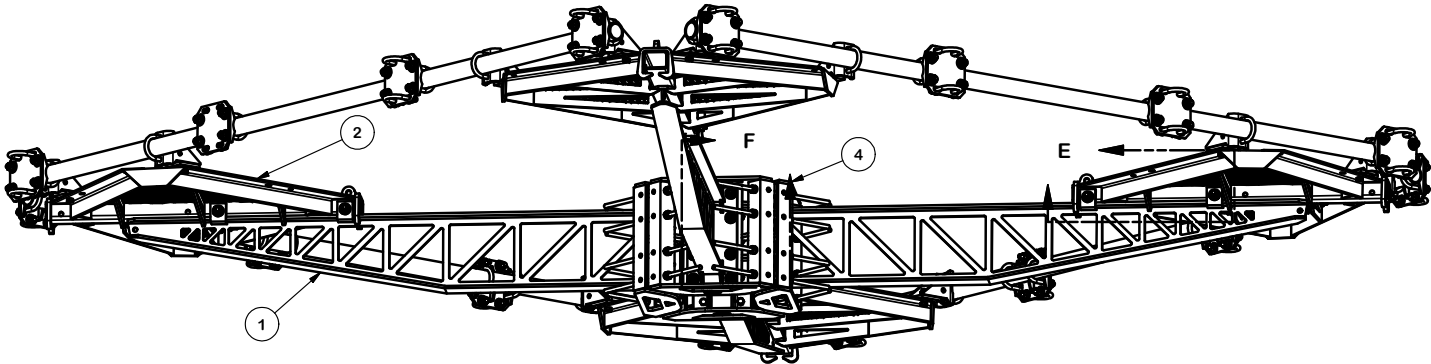
Engineering
 Support Team:
 1-888-753-7446

Locations:
 New York, NY
 Atlanta, GA
 Los Angeles, CA
 Plymouth, IN
 Salem, OR
 Dallas, TX

PART NO.	F4P-12-H5
DWG. NO.	F4P-12-H5

NOTE:

ANTENNA MOUNTING PIPES AND WALKWAY
REMOVED FOR CLAIRTY



TOLERANCE NOTES

TOLERANCES ON DIMENSIONS, UNLESS OTHERWISE NOTED ARE:
SAWED, SHEARED AND GAS CUT EDGES ($\pm 0.030"$)
DRILLED AND GAS CUT HOLES ($\pm 0.030"$) - NO CONING OF HOLES
LASER CUT EDGES AND HOLES ($\pm 0.010"$) - NO CONING OF HOLES
BENDS ARE $\pm 1/2$ DEGREE
ALL OTHER MACHINING ($\pm 0.030"$)
ALL OTHER ASSEMBLY ($\pm 0.060"$)

PROPRIETARY NOTE:
THE DATA AND TECHNIQUES CONTAINED IN THIS DRAWING ARE PROPRIETARY INFORMATION OF VALMONT INDUSTRIES AND CONSIDERED A TRADE SECRET. ANY USE OR DISCLOSURE WITHOUT THE CONSENT OF VALMONT INDUSTRIES IS STRICTLY PROHIBITED.

DESCRIPTION
F4P-12-H5

CPD NO.	DRAWN BY CEK 10/29/2017	ENG. APPROVAL
CLASS 81	SUB 02	DRAWING USAGE CUSTOMER
	CHECKED BY BMC 11/1/2017	



Engineering
Support Team:
1-888-753-7446

A valmont COMPANY

Locations:
New York, NY
Atlanta, GA
Los Angeles, CA
Plymouth, IN
Salem, OR
Dallas, TX

PART NO.	F4P-12-H5	PAGE 4 OF 4
DWG. NO.	F4P-12-H5	